


Walbaum User Guide:
Optical Sizing and Ornaments

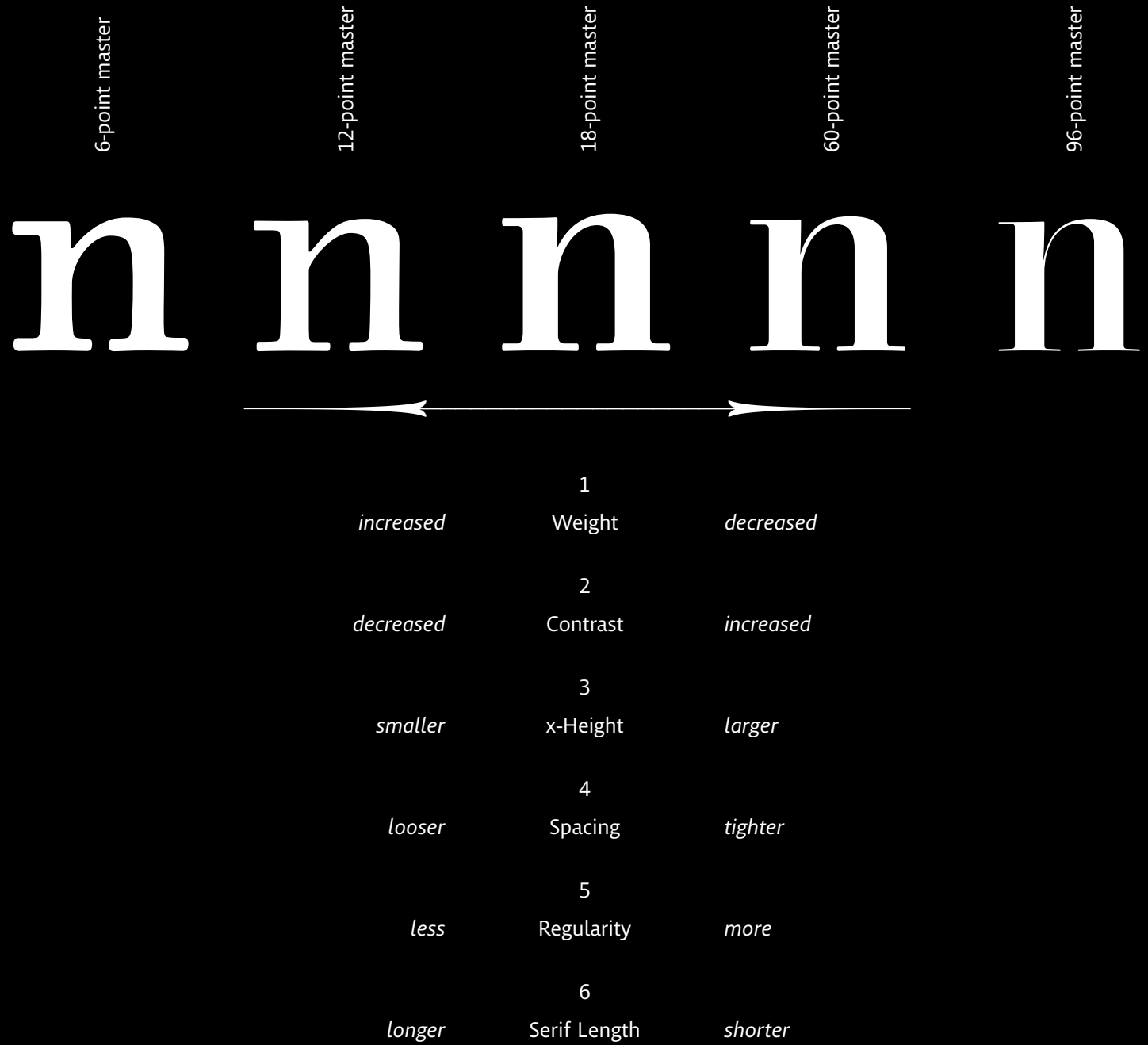


Monotype

Optical Sizing

Explanation of Optical Sizing

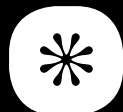
Six key aspects change as the optical size moves from smallest to largest: weight, contrast, x-height, spacing, regularity, and serif length



Variation Distribution

	Thin	Light	Regular	Medium	Semibold	Bold	ExtraBold	Heavy	Black	ExtraBlack
6pt			a		a	a				
			<i>a</i>		<i>a</i>	<i>a</i>				
12pt		a	a		a	a				
		<i>a</i>	<i>a</i>		<i>a</i>	<i>a</i>				
18pt		a	a	a	a	a	a	a		
		<i>a</i>	<i>a</i>	<i>a</i>	<i>a</i>	<i>a</i>	<i>a</i>	<i>a</i>		
60pt		a	a	a	a	a	a	a	a	
		<i>a</i>	<i>a</i>	<i>a</i>	<i>a</i>	<i>a</i>	<i>a</i>	<i>a</i>	<i>a</i>	
96pt	a	a	a	a	a	a	a	a	a	a
	<i>a</i>	<i>a</i>	<i>a</i>	<i>a</i>	<i>a</i>	<i>a</i>	<i>a</i>	<i>a</i>	<i>a</i>	<i>a</i>
	Thin	Light	Regular	Medium	Semibold	Bold	ExtraBold	Heavy	Black	ExtraBlack

Ornaments



Variant One-line Showings

Walbaum 06pt Regular

ABCDEFGHIJKLMNOPQRSTUVWXYZ&abcdefghijklmnopqrstuvwx

Walbaum 06pt Italic

ABCDEFGHIJKLMNOPQRSTUVWXYZ&abcdefghijklmnopqrstuvwx

Walbaum 06pt Semibold

ABCDEFGHIJKLMNOPQRSTUVWXYZ&abcdefghijklmnopqrstuvw

Walbaum 06pt Semibold Italic

ABCDEFGHIJKLMNOPQRSTUVWXYZ&abcdefghijklmnopqrstuvw

Walbaum 06pt Bold

ABCDEFGHIJKLMNOPQRSTUVWXYZ&abcdefghijklmnopqrstuv

Walbaum 06pt Bold Italic

ABCDEFGHIJKLMNOPQRSTUVWXYZ&abcdefghijklmnopqrstuv

Walbaum 12pt Light

ABCDEFGHIJKLMNOPQRSTUVWXYZ&abcdefghijklmnopqrstuvwxyz01

Walbaum 12pt Light Italic

ABCDEFGHIJKLMNOPQRSTUVWXYZ&abcdefghijklmnopqrstuvwxyz

Walbaum 12pt Regular

ABCDEFGHIJKLMNOPQRSTUVWXYZ&abcdefghijklmnopqrstuvwxyz0

Walbaum 12pt Italic

ABCDEFGHIJKLMNOPQRSTUVWXYZ&abcdefghijklmnopqrstuvwxy

Walbaum 12pt Semibold

ABCDEFGHIJKLMNOPQRSTUVWXYZ&abcdefghijklmnopqrstuvwxyz

Walbaum 12pt Semibold Italic

ABCDEFGHIJKLMNOPQRSTUVWXYZ&abcdefghijklmnopqrstuvwxy

Walbaum 12pt Bold

ABCDEFGHIJKLMNOPQRSTUVWXYZ&abcdefghijklmnopqrstuvwxy

Walbaum 12pt Bold Italic

ABCDEFGHIJKLMNOPQRSTUVWXYZ&abcdefghijklmnopqrstuvw

Walbaum 18pt Light

ABCDEFGHIJKLMNOPQRSTUVWXYZ&abcdefghijklmnopqrstuvwxyz01234567

Walbaum 18pt Light Italic

ABCDEFGHIJKLMNOPQRSTUVWXYZ&abcdefghijklmnopqrstuvwxyz01234

Walbaum 18pt Regular

ABCDEFGHIJKLMNOPQRSTUVWXYZ&abcdefghijklmnopqrstuvwxy0123456

Walbaum 18pt Italic

ABCDEFGHIJKLMNOPQRSTUVWXYZ&abcdefghijklmnopqrstuvwxy0123

Walbaum 18pt Medium

ABCDEFGHIJKLMNOPQRSTUVWXYZ&abcdefghijklmnopqrstuvwxyz0123

Walbaum 18pt Medium Italic

ABCDEFGHIJKLMNOPQRSTUVWXYZ&abcdefghijklmnopqrstuvwxy

Walbaum 18pt Semibold

ABCDEFGHIJKLMNOPQRSTUVWXYZ&abcdefghijklmnopqrstuvwxy

Walbaum 18pt Semibold Italic

ABCDEFGHIJKLMNOPQRSTUVWXYZ&abcdefghijklmnopqrstuv

Walbaum 18pt Bold

ABCDEFGHIJKLMNOPQRSTUVWXYZ&abcdefghijklmnopqrst

Walbaum 18pt Bold Italic

ABCDEFGHIJKLMNOPQRSTUVWXYZ&abcdefghijklmnopq

Walbaum 18pt Extrabold

ABCDEFGHIJKLMNOPQRSTUVWXYZ&abcdefghijklmnopno

Walbaum 18pt Extrabold Italic

ABCDEFGHIJKLMNOPQRSTUVWXYZ&abcdefghijklm

Walbaum 18pt Heavy

ABCDEFGHIJKLMNOPQRSTUVWXYZ&abcdefghijkl

Walbaum 18pt Heavy Italic

ABCDEFGHIJKLMNOPQRSTUVWXYZ&abcdefghij

Walbaum 60pt Light

ABCDEFGHIJKLMNOPQRSTUVWXYZ&abcdefghijklmnopqrstuvwxyz012345

Walbaum 60pt Light Italic

ABCDEFGHIJKLMNOPQRSTUVWXYZ&abcdefghijklmnopqrstuvwxyz0123456

Walbaum 60pt Regular

ABCDEFGHIJKLMNOPQRSTUVWXYZ&abcdefghijklmnopqrstuvwxyz0123456

Walbaum 60pt Italic

ABCDEFGHIJKLMNOPQRSTUVWXYZ&abcdefghijklmnopqrstuvwxyz01234

Walbaum 60pt Medium

ABCDEFGHIJKLMNOPQRSTUVWXYZ&abcdefghijklmnopqrstuvwxyz012345

Walbaum 60pt Medium Italic

ABCDEFGHIJKLMNOPQRSTUVWXYZ&abcdefghijklmnopqrstuvwxyz012

Walbaum 60pt Semibold

ABCDEFGHIJKLMNOPQRSTUVWXYZ&abcdefghijklmnopqrstuvwxyz

Walbaum 60pt Semibold Italic

ABCDEFGHIJKLMNOPQRSTUVWXYZ&abcdefghijklmnopqrstuvw

Walbaum 60pt Bold

ABCDEFGHIJKLMNOPQRSTUVWXYZ&abcdefghijklmnopqrst

Walbaum 60pt Bold Italic

ABCDEFGHIJKLMNOPQRSTUVWXYZ&abcdefghijklmnopq

Walbaum 60pt Extrabold

ABCDEFGHIJKLMNOPQRSTUVWXYZ&abcdefghijklmnopno

Walbaum 60pt Extrabold Italic

ABCDEFGHIJKLMNOPQRSTUVWXYZ&abcdefghijklm

Walbaum 60pt Heavy

ABCDEFGHIJKLMNOPQRSTUVWXYZ&abcdefghijkl

Walbaum 60pt Heavy Italic

ABCDEFGHIJKLMNOPQRSTUVWXYZ&abcdefghi

Walbaum 60pt Black

ABCDEFGHIJKLMNOPQRSTUVWXYZ&abcdefghi

Walbaum 60pt Black Italic

ABCDEFGHIJKLMNOPQRSTUVWXYZ&abcdef

Walbaum 96pt Thin

ABCDEFGHIJKLMNOPQRSTUVWXYZ&abcdefghijklmnopqrstuvwxyz012345678

Walbaum 96pt Thin Italic

ABCDEFGHIJKLMNOPQRSTUVWXYZ&abcdefghijklmnopqrstuvwxyz0123456789

Walbaum 96pt Light

ABCDEFGHIJKLMNOPQRSTUVWXYZ&abcdefghijklmnopqrstuvwxyz012345678

Walbaum 96pt Light Italic

ABCDEFGHIJKLMNOPQRSTUVWXYZ&abcdefghijklmnopqrstuvwxyz01234567

Walbaum 96pt Regular

ABCDEFGHIJKLMNOPQRSTUVWXYZ&abcdefghijklmnopqrstuvwxyz01234567

Walbaum 96pt Italic

ABCDEFGHIJKLMNOPQRSTUVWXYZ&abcdefghijklmnopqrstuvwxyz012345

Walbaum 96pt Medium

ABCDEFGHIJKLMNOPQRSTUVWXYZ&abcdefghijklmnopqrstuvwxyz0123456

Walbaum 96pt Medium Italic

ABCDEFGHIJKLMNOPQRSTUVWXYZ&abcdefghijklmnopqrstuvwxyz012

Walbaum 96pt Semibold

ABCDEFGHIJKLMNOPQRSTUVWXYZ&abcdefghijklmnopqrstuvwxyz

Walbaum 96pt Semibold Italic

ABCDEFGHIJKLMNOPQRSTUVWXYZ&abcdefghijklmnopqrstuvwxyz

Walbaum 96pt Bold

ABCDEFGHIJKLMNOPQRSTUVWXYZ&abcdefghijklmnopqrstuvwxyz

Walbaum 96pt Bold Italic

ABCDEFGHIJKLMNOPQRSTUVWXYZ&abcdefghijklmnopqrstuvwxyz

Walbaum 96pt Extrabold

ABCDEFGHIJKLMNOPQRSTUVWXYZ&abcdefghijklmnop

Walbaum 96pt Extrabold Italic

ABCDEFGHIJKLMNOPQRSTUVWXYZ&abcdefghijklmnop

Walbaum 96pt Heavy

ABCDEFGHIJKLMNOPQRSTUVWXYZ&abcdefghijklmnop

Walbaum 96pt Heavy Italic

ABCDEFGHIJKLMNOPQRSTUVWXYZ&abcdefghijklmnop

Walbaum 96pt Black

ABCDEFGHIJKLMNOPQRSTUVWXYZ&abcdefghijklmnop

Walbaum 96pt Black Italic

ABCDEFGHIJKLMNOPQRSTUVWXYZ&abcdefghijklmnop

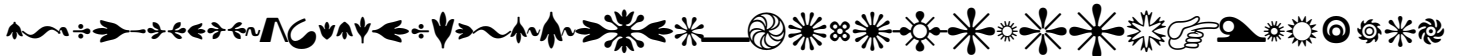
Walbaum 96pt Extra Black

ABCDEFGHIJKLMNOPQRSTUVWXYZ&abcdefghijklmnop

Walbaum 96pt Extra Black Italic

ABCDEFGHIJKLMNOPQRSTUVWXYZ&abcdefghijklmnop

Walbaum Ornaments



Walbaum 96pt Regular and Italic

Sagittariidae
Apterygidae

Walbaum 60pt Regular and Italic

Ducks Geese Swans
Pheasants Magpies

Walbaum 18pt Regular and Italic

Copper Explain Ill-fated Truck Neat Unite Branch Educated Hum
Smell Stamp Uttermost Lighten Replace Chew Size Plough Bury

Walbaum 12pt Regular and Italic

To go into solitude, a man needs to retire as much from his chamber as from society. I am not solitary whilst I read and write, though nobody is with me. But if a man would be alone, let him look at the stars. The rays that come from those heavenly worlds, will separate between him and what he touches. One might think *to give man, in the heavenly bodies, the perpetual presence of the sublime. Seen in the streets of cities, how great they are! If the stars should appear one night in a thousand years, how would men believe and adore; and preserve for many generations the remembrance of*

Walbaum 06pt Regular and Italic

To speak truly, few adult persons can see nature. Most persons do not see the sun. At least they have a very superficial seeing. The sun illuminates only the eye of the man, but shines into the eye and the heart of the child. The lover of nature is he whose inward and outward senses are still truly adjusted to each other; who has retained the spirit of infancy even into the era of manhood. His intercourse with heaven and earth, becomes part of his daily food. In the presence of nature, a wild delight runs through the man, in spite of real sorrows. Nature says, *he be glad with me. Not the sun or the summer alone, but every hour and season yields its tribute of delight; for every hour and change corresponds to and authorizes a different state of the mind, from breathless noon to grimmest midnight. Nature is a setting that fits equally well a comic or a mourning piece. In good health, the air is a cordial of incredible virtue. Crossing a bare common, in snow puddles, at twilight, under a clouded sky, without having in my thoughts any occurrence of special good fortune, I have enjoyed a perfect exhilaration. I am glad to the brink of fear. In the woods*

Walbaum 96pt Semibold and Semibold Italic

Magellanic *Sandpiper*

Walbaum 60pt Semibold and Semibold Italic

Crab-plover Auks *Barn Owl Skuas*

Walbaum 18pt Semibold and Semibold Italic

Second-hand Birds Exuberant Play Past Legal Mine Train *Spectacular Gamy Wander Invents Bitter Thumb Cart*

Walbaum 12pt Semibold and Semibold Italic

To go into solitude, a man needs to retire as much from his chamber as from society. I am not solitary whilst I read and write, though nobody is with me. But if a man would be alone, let him look at the stars. The rays that come from those heavenly worlds, will separate between him and what he touches. *One with this design, to give man, in the heavenly bodies, the perpetual presence of the sublime. Seen in the streets of cities, how great they are! If the stars should appear one night in a thousand years, how would men believe and adore; and preserve for many generations*

Walbaum 06pt Semibold and Semibold Italic

To speak truly, few adult persons can see nature. Most persons do not see the sun. At least they have a very superficial seeing. The sun illuminates only the eye of the man, but shines into the eye and the heart of the child. The lover of nature is he whose inward and outward senses are still truly adjusted to each other; who has retained the spirit of infancy even into the era of manhood. His intercourse with heaven and earth, becomes part of his daily food. In the presence of nature, a wild delight runs through the and me. *Not the sun or the summer alone, but every hour and season yields its tribute of delight; for every hour and change corresponds to and authorizes a different state of the mind, from breathless noon to grimmest midnight. Nature is a setting that fits equally well a comic or a mourning piece. In good health, the air is a cordial of incredible virtue. Crossing a bare common, in snow puddles, at twilight, under a clouded sky, without having in my thoughts any occurrence of special good fortune, I have enjoyed a perfect exhilaration. I am glad to the brink of fear. In the woods too,*

Walbaum 96pt Bold and Bold Italic

Nightjars *Piprididae*

Walbaum 60pt Bold and Bold Italic

Australian Wren *Vanga Bastise*

Walbaum 18pt Bold and Bold Italic

Hot Twig Heap Chokes Approved Gate Wreck Hobby *Offbeat Deadpan Doll Frames Outgoing Minutes*

Walbaum 12pt Bold and Bold Italic

To go into solitude, a man needs to retire as much from his chamber as from society. I am not solitary whilst I read and write, though nobody is with me. But if a man would be alone, let him look at the stars. The rays that come from those heavenly worlds, *with this design, to give man, in the heavenly bodies, the perpetual presence of the sublime. Seen in the streets of cities, how great they are! If the stars should appear one night in a thousand years, how would men believe and adore; and preserve for many generations the remembrance of the city of God*

Walbaum 06pt Bold and Bold Italic

To speak truly, few adult persons can see nature. Most persons do not see the sun. At least they have a very superficial seeing. The sun illuminates only the eye of the man, but shines into the eye and the heart of the child. The lover of nature is he whose inward and outward senses are still truly adjusted to each other; who has retained the spirit of infancy even into the era of manhood. His intercourse with heaven and earth, becomes part of his daily food. In the presence of nature, a wild delight runs through the man, *maugre all his impertinent griefs, he shall be glad with me. Not the sun or the summer alone, but every hour and season yields its tribute of delight; for every hour and change corresponds to and authorizes a different state of the mind, from breathless noon to grimmest midnight. Nature is a setting that fits equally well a comic or a mourning piece. In good health, the air is a cordial of incredible virtue. Crossing a bare common, in snow puddles, at twilight, under a clouded sky, without having in my thoughts any occurrence of special*

Walbaum 96pt Light and Light Italic

Quail-thrush
Berryhunter

Walbaum 60pt Light and Light Italic

Cuckooshrike Peltop
Pityriaseidae Crows

Walbaum 18pt Light and Light Italic

Aloof But Gabby Commander Names Waters Lunchroom Claimant
Tacky Shoe Absorbs Disagreeable Nostalgic Victorious Religions

Walbaum 12pt Light and Light Italic

To go into solitude, a man needs to retire as much from his chamber as from society. I am not solitary whilst I read and write, though nobody is with me. But if a man would be alone, let him look at the stars. The rays that come from those heavenly worlds, will separate between him and what he touches. One might think *to give man, in the heavenly bodies, the perpetual presence of the sublime. Seen in the streets of cities, how great they are! If the stars should appear one night in a thousand years, how would men believe and adore; and preserve for many generations the remembrance of*

Walbaum 96pt Medium and Medium Italic

Melampittas
Nuthatches

Walbaum 60pt Medium and Medium Italic

Barwing Sugarbird
Rhodinocichlidae

Walbaum 18pt Medium and Medium Italic

Smiling Expert Receives Grotesque Blind Car Jewel Action
Quivering Collector Bangs Defiantly Awaiting Wired Supers

Walbaum 96pt Extrabold and Extrabold Italic

Tangled
Antbird

Walbaum 60pt Extrabold and Extrabold Italic

Becards Ioras
Chaetopidae

Walbaum 18pt Extrabold and Extrabold Italic

Special Spiky Wood Creature Made Redundant
Fanatical Breath Damages Important Lid

Walbaum 96pt Heavy and Heavy Italic

Boatbill
Sittella

Walbaum 60pt Heavy and Heavy Italic

Bushshrikes
Turnagras

Walbaum 18pt Heavy and Heavy Italic

Selective Library Play Prevents Swim Plot
Dysfunctional Secret Pinch Fixes Oval

Walbaum 96pt Black and Black Italic

Rollers
Grebes

Walbaum 60pt Black and Black Italic

Pelican Ibis
Flamingos

Walbaum 96pt Extra Black and Extra Black Italic

Oriole
Wings

Walbaum 96pt Thin and Thin Italic

Pnoepygidae
Scotoceridae

Ornament Guide

Ornament Keyboard Layout

This keyboard layout displays the first set of ornaments. The top row includes keys for characters 1 through 0, each with a unique geometric or circular ornament. The second row contains letters Q through P, followed by brackets and a backslash, each with a corresponding ornament. The third row contains letters A through L, followed by a semicolon and an apostrophe, each with an ornament. The bottom row shows the Shift, Z, X, C, V, B, N, M, comma, period, and forward slash keys, with various geometric ornaments assigned to the letters. The Ctrl, Opt, and Cmd keys are also shown.

This keyboard layout displays the second set of ornaments. The top row includes keys for characters 1 through 0, each with a unique floral or arrow-shaped ornament. The second row contains letters Q through P, followed by brackets and a backslash, each with a corresponding ornament. The third row contains letters A through L, followed by a semicolon and an apostrophe, each with an ornament. The bottom row shows the Shift, Z, X, C, V, B, N, M, comma, period, and forward slash keys, with various floral and arrow ornaments assigned to the letters. The Ctrl, Opt, and Cmd keys are also shown.

This keyboard layout displays the third set of ornaments. The top row includes keys for characters 1 through 0, each with a unique leafy or floral ornament. The second row contains letters Q through P, followed by brackets and a backslash, each with a corresponding ornament. The third row contains letters A through L, followed by a semicolon and an apostrophe, each with an ornament. The bottom row shows the Shift, Z, X, C, V, B, N, M, comma, period, and forward slash keys, with various leafy and floral ornaments assigned to the letters. The Ctrl, Opt, and Cmd keys are also shown.

This keyboard layout displays the fourth set of ornaments, which are decorative flourishes and lines. The top row includes keys for characters 1 through 0, each with a unique flourish or line ornament. The second row contains letters Q through P, followed by brackets and a backslash, each with a corresponding ornament. The third row contains letters A through L, followed by a semicolon and an apostrophe, each with an ornament. The bottom row shows the Shift, Z, X, C, V, B, N, M, comma, period, and forward slash keys, with various flourish and line ornaments assigned to the letters. The Ctrl, Opt, and Cmd keys are also shown. Dotted lines connect the letters Z, X, C, V, B, N, M, comma, period, and forward slash to their respective flourish ornaments below the keyboard.